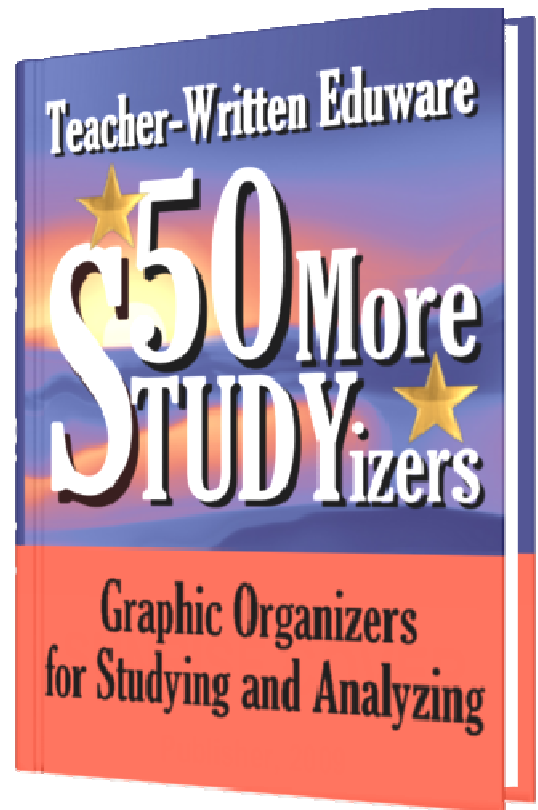
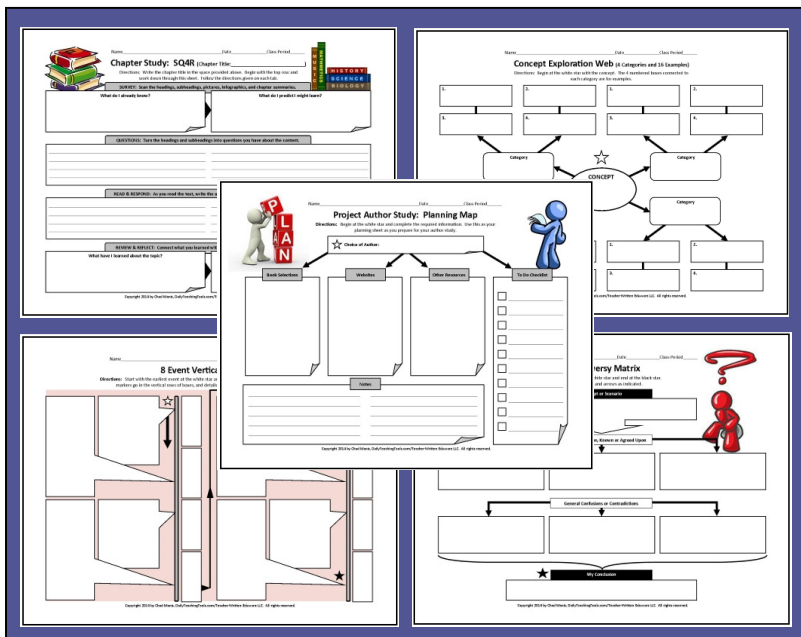
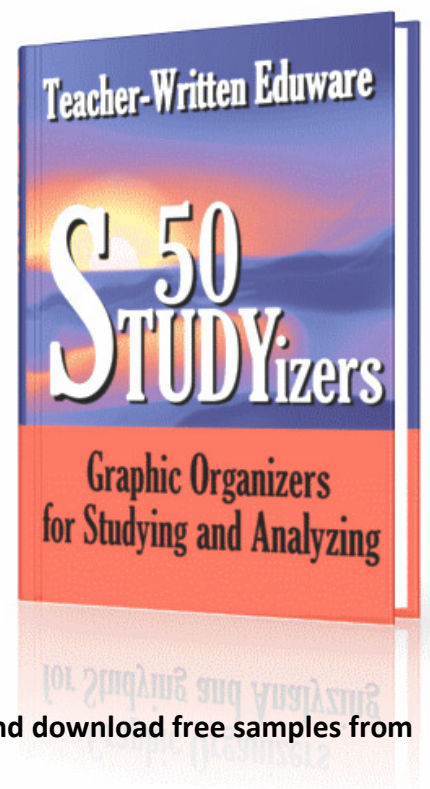
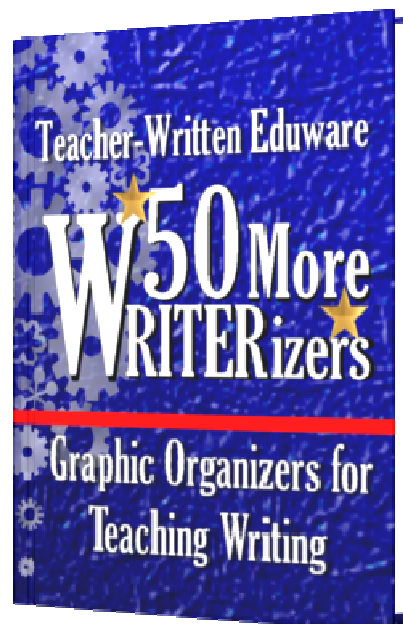
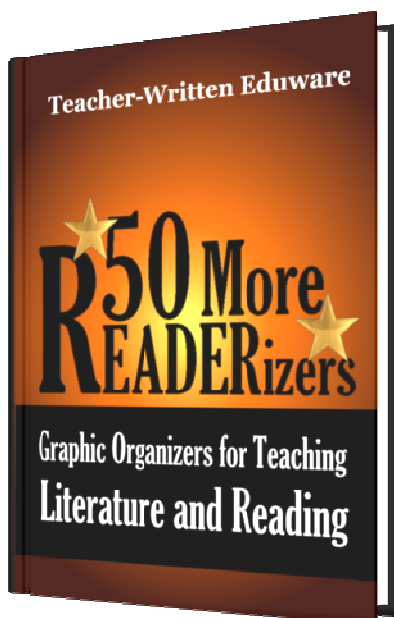


10 Free Samples from..



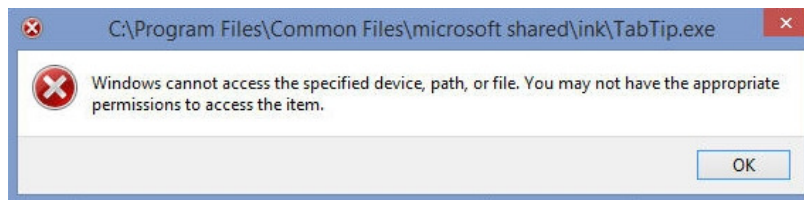
You May Also Like...



Click on any of the titles above to get full details, see screenshots, and download free samples from DailyTeachingTools.com.

Notes about Customization

Four of the samples included in this set of ten graphic organizers are customizable. You may type in your own title, directions, and labels wherever you encounter a tool tip.



Tool tips appear when you hover your mouse pointer over active points (the likely label areas). When you click on any of these areas, you may see a Windows dialogue box similar to what appears above. Simply click the OK button and proceed with your typing. You WILL be able to print your customized organizer, but you will NOT be able to save your changes.

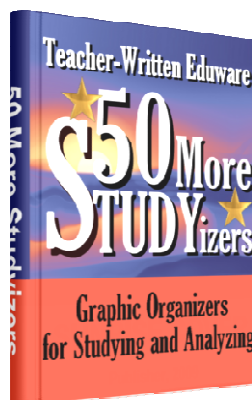


Table of Contents

Note: Click any title to travel immediately to it. STUDYizers listed in black are ready to use as is. The italicized ones are customizable. Just click in the Tool Tip areas to type what you require (see “Notes about Customization” above).

The titles listed in blue are included in the full version of 50 More STUDYizers.

Time Organizers

[8 Step Cycle Flow Map](#)

[8 Event Vertical Timeline](#)

[12 Event Vertical Timeline](#)

[Weekly Homework Log](#)

[Major Assignment Map](#)

[Major Assignment Map](#)

Learning Maps

[KWL Premium Research Chart](#)

[KWL Premium Research Chart](#)

[Super Think, Pair, Share](#)

[Super Think, Pair, Share](#)

[Chapter Study: SQ4R](#)

[Chapter Study: SQ4R](#)

[Research Question Generator](#)

Project Internet

[Website Evaluation \(1 of 2\)](#)

[Website Evaluation \(2 of 2\)](#)

[Website Resource Web](#)

[Website Resource Web](#)

[Website Comparison](#)

[Website Comparison](#)

[Search Engine Comparison](#)

[Search Engine Comparison](#)

[Head to Head Search](#)

Concepts and Characteristics

[Concept Exploration Web \(4, 16\)](#)

[Concept Exploration Web \(4, 16\)](#)

[Concept Exploration Web \(6, 18\)](#)

[Concept Exploration Web \(6, 18\)](#)

[Characteristics Comparison Matrix](#)

Vocabulary Charts

[Vocabulary Quadrant Chart](#)

[Vocabulary Summary Sheet](#)

[Vocabulary Summary Sheet](#)

Project Author Study

[Planning Map](#)

[Planning Map](#)

[Author's Background](#)

[Author's Background](#)

[Behind the Book](#)

[Behind the Book](#)

[Book Log](#)

[Book Log](#)

[Book Comparison Venn](#)

[Book Comparison Venn](#)

[Character Comparison Log](#)

[Character Comparison Log](#)

[Author's Summary Spider](#)

Decisions and Goals

[Controversy Matrix](#)

[Controversy Matrix](#)

[Dilemma Analysis Web](#)

[Dilemma Analysis Web](#)

[Decision Map](#)

[Goal Achievement Planning Map](#)

[Help Wanted Exploratory Ads](#)

Name _____ Date _____ Class Period _____

8 Event Vertical Timeline

Directions: Start with the earliest event at the white star and end with the latest event at the black star. Time markers go in the vertical rows of boxes, and details about each event go in the pointing boxes.

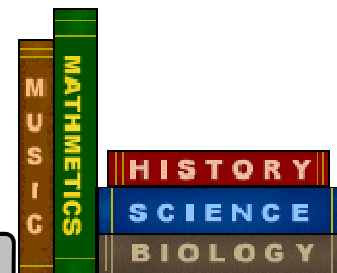
The template consists of two identical vertical timeline structures side-by-side. Each structure features a central vertical column with four rectangular boxes for time markers. To the left and right of this column are larger, irregularly shaped boxes for event details. A white star is located at the top of the left timeline, and a black star is at the bottom of the right timeline. Arrows indicate a downward flow from the white star to the black star, passing through the central column and the event detail boxes. The entire template is set against a light pink background.



Name _____ Date _____ Class Period _____

Chapter Study: SQ4R (Chapter Title: _____)

Directions: Write the chapter title in the space provided above. Begin with the top row and work down through this sheet. Follow the directions given on each tab.



SURVEY: Scan the headings, subheadings, pictures, infographics, and chapter summaries.

What do I already know?

What do I predict I might learn?

QUESTIONS: Turn the headings and subheadings into questions you have about the content.

READ & RESPOND: As you read the text, write the answers to your questions as you find them.

REVIEW & REFLECT: Connect what you learned with what you already know about this topic.

What have I learned about the topic?

What do I need to know more about?

Name _____ Date _____ Class Period _____

Name _____ Date _____ Class Period _____

Research Question Generator

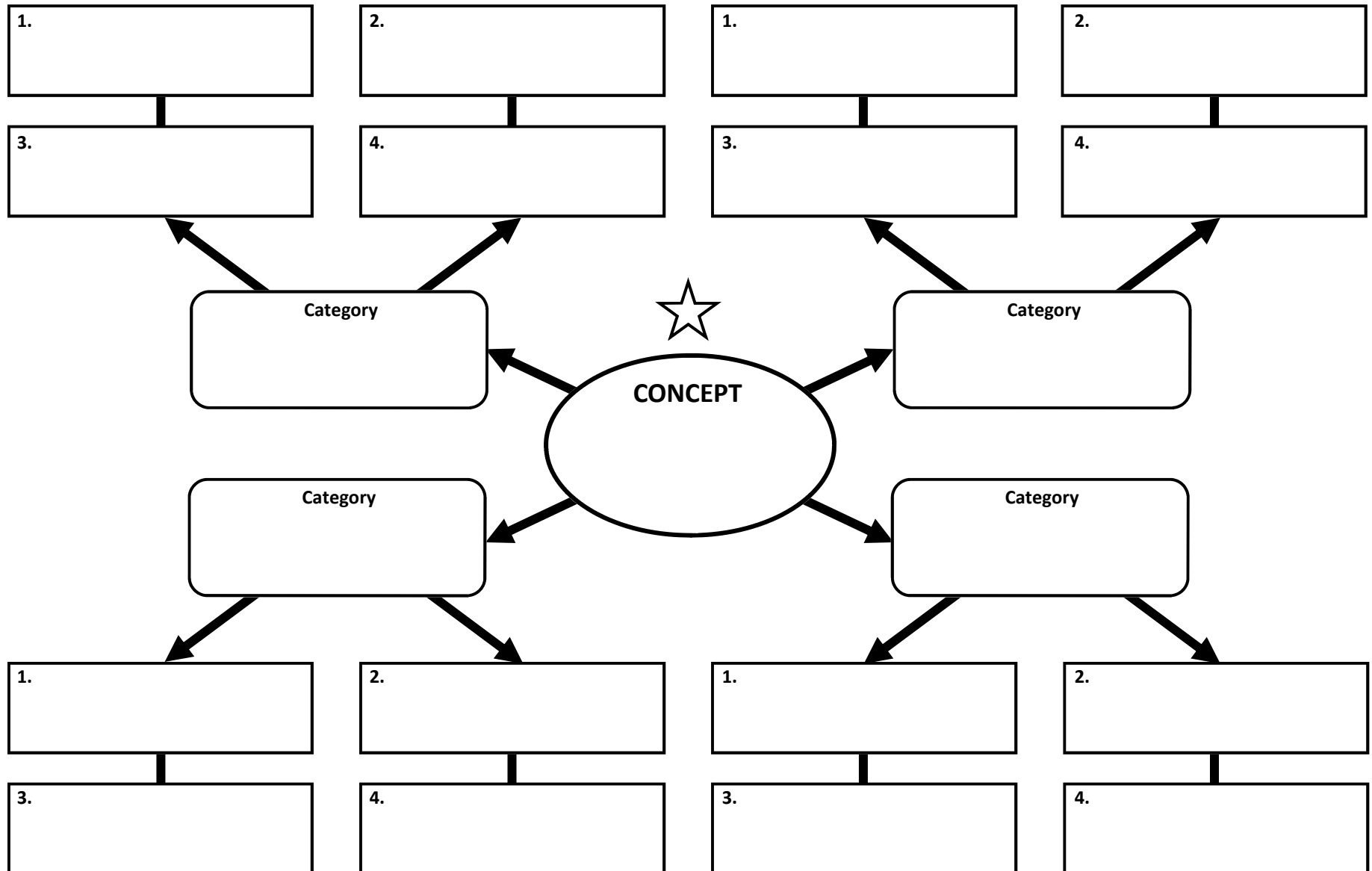
Directions: Select a cell from the grid below and use the two words that describe its location to write a question. Repeat this procedure for as many other cells as needed.

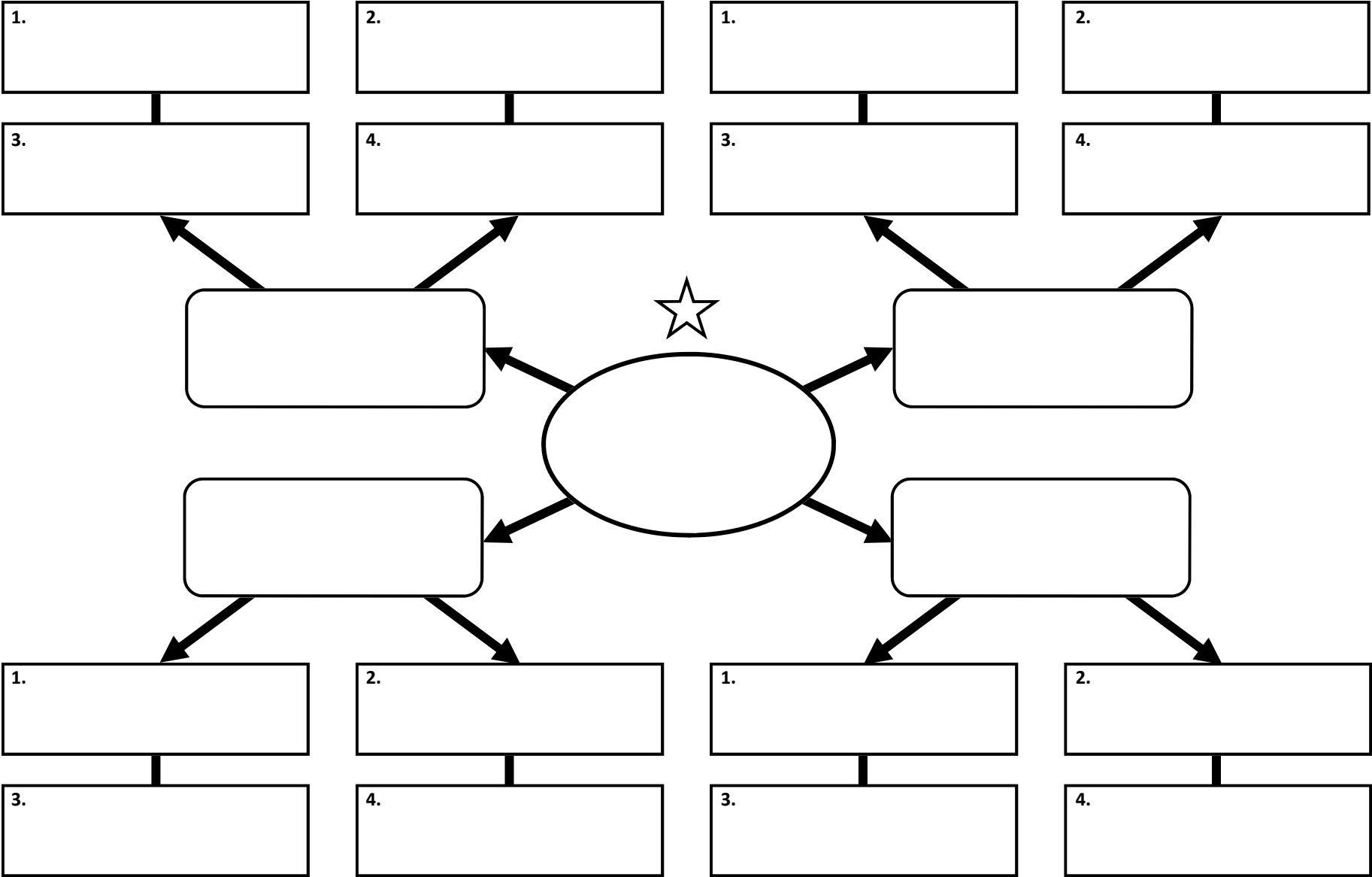
	DID	CAN	WOULD	WILL	MIGHT
WHO					
WHAT					
WHEN					
WHERE					
HOW					
WHY					

Name _____ Date _____ Class Period _____

Concept Exploration Web (4 Categories and 16 Examples)

Directions: Begin at the white star with the concept. The 4 numbered boxes connected to each category are for examples.





Name _____ Date _____ Class Period _____

Project Author Study: Planning Map

Directions: Begin at the white star and complete the required information. Use this as your planning sheet as you prepare for your author study.



☆ Choice of Author: _____

Book Selections

Websites

Other Resources

To Do Checklist

Notes

Name _____ Date _____ Class Period _____

The graphic organizer consists of the following elements:

- A central box at the top containing a star icon.
- Four arrows pointing from the central box to four separate boxes:
 - Three vertical boxes arranged horizontally in the middle. Each has a gray header box at the top and a folded-corner effect at the bottom right.
 - One large box on the right side, containing a list of 10 horizontal lines, each preceded by a small square checkbox. It also has a folded-corner effect at the bottom right.
- A wide box at the bottom, spanning the width of the three middle vertical boxes. It contains two columns of five horizontal lines each, with a folded-corner effect at the bottom right.



Name _____ Date _____ Class Period _____

Controversy Matrix

Directions: Begin at the white star and end at the black star.
Follow the labels and arrows as indicated.



Concept or Scenario

General Information, Known or Agreed Upon

General Confusions or Contradictions



My Conclusion

